

SOLD



7 Peachtree Close, Carindale

This luxurious lowset residence is primely situated at the crest of the street in a highly sought after golf course estate. The classic style home is a private retreat for retirees or professionals looking for a low maintenance, no Body Corporate, living environment. The elderly original owners have now reluctantly decided to put their much loved home on the market.

Properties in this boutique estate are tightly held because of the unique and intimate sense of community that comes with living in such exclusive surrounds. From the tree-lined streets to the beautifully maintained quality homes designed by Mirvac, the area offers an ideal lifestyle where peace and tranquillity are assured....

The home itself features a beautiful, light-filled interior and a spacious, thoughtful floorplan that makes the most of its enviable elevated position. The perfectly appointed interior offers a luxurious yet warm welcoming feel and has been

3  2  2 

Price: \$775,000

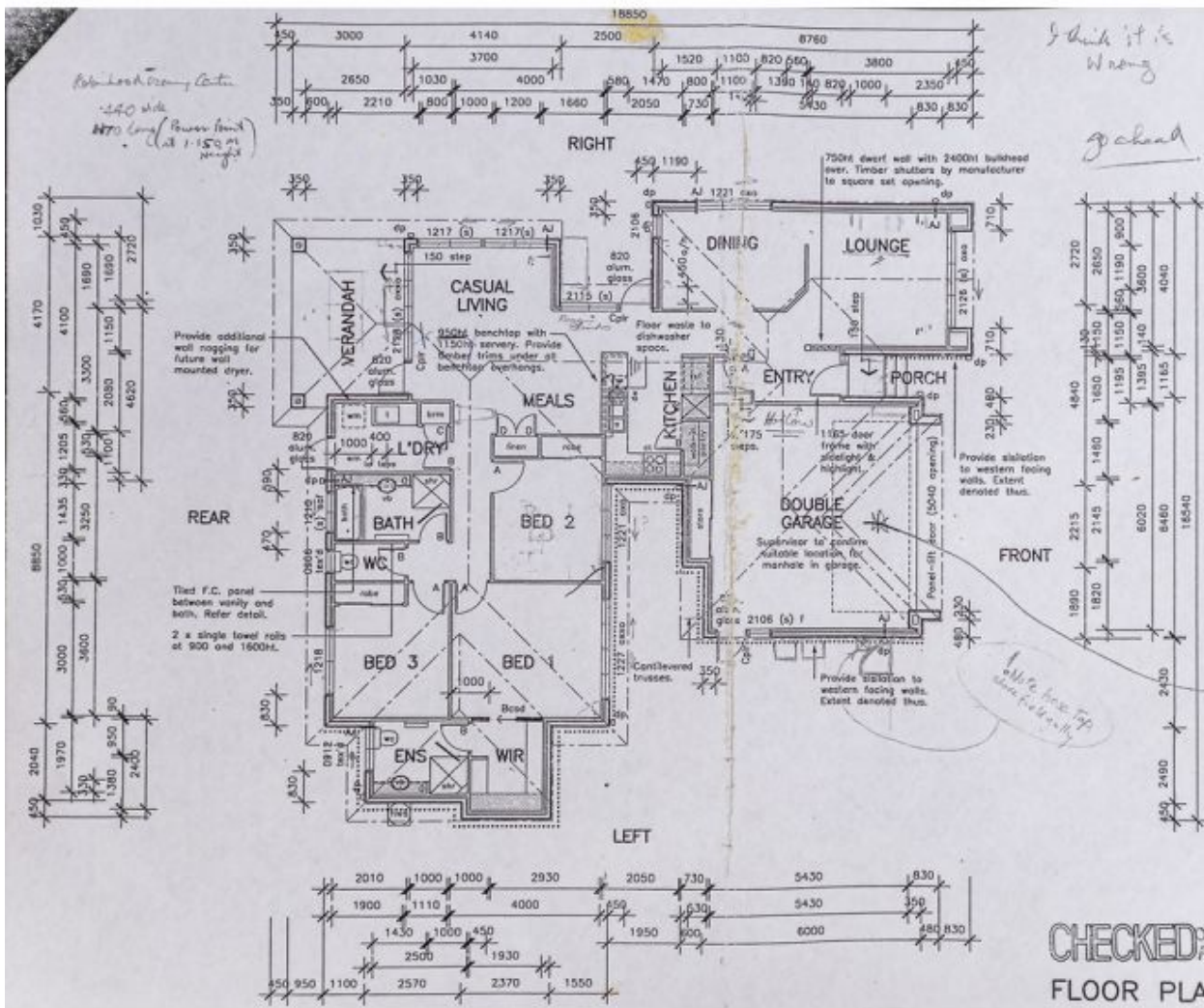
View: <https://remaxunitedvision.com.au/5035240>

June Wheeler

M 0413 125 725



RE/MAX United Vision,
Carina



Area

A	LIVING	147.4 sq m
B	GARAGE	40.4 sq m
C	PORCH	1.1 sq m
D	VERANDAH	12.8 sq m
TOTAL AREA		201.7 sq m

General Notes

SWING DOORS

Type A = 620mm
 Type B = 720mm
 Type C = 820mm
 Type D = 920mm
 Type E = 1020mm
 Type F = 1120mm
 Type G = 1220mm
 Size by cabinet maker.

WALL WIDTHS

220mm
 240mm
 200mm
 70mm
 90mm

Subsist at 2100h.

Subsist at 2400h U.A.G.

Hamper at nominated height.

WT, W2 Cover plates / joints.
& WC Water storage cistern.
Cpl Aluminium joinery cassette.
AJ Brickett articulation joint.

SHOWNERS :
 Provide 300x300x250h triangular steel step to showers.

FALLS TO WET AREAS :
 All wet areas to have a fall of min. 1 in 40 towards shower wastes and 1 in 100 towards general bathroom area floor wastes.

SPECIFIC NOTES

NOTE TO BRICKLAYER
 Lower portion of brick walls to be corbelled 2mm. Refer elevations.

NOTE TO FRAME SUPPLIER
 Ceiling height to be 2740h except garage which is 3092h.

MIRVAC HOMES

The Mirvac Group
 80 Park Road
 Milton QLD 4064
 Telephone
 (07) 3859 5888
 Fax
 (07) 3367 6010
 Email
 info@mirvac.com.au

Prepared: **SPECIAL LOT 47**

Checked by: **Paul Wheeler**

Drawn: **Paul Wheeler**

Scale: 1:100 or as shown.

Date: DEC 99

Drawn: SC

CHECKED BY
FLOOR PLAN